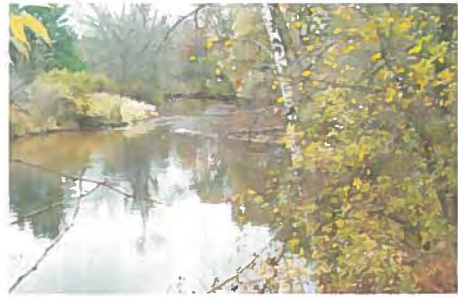


Your River Ridge Trail

3. SHAMBEAU PARK .4 mi

The Shambeau family donated this park to the City of Waupaca. These wooded acres surround an old water-filled quarry and rock outcroppings along with two small ponds. With grant funds, a wheelchair accessible trail segment allows access to the water's edge and interpretive signs describe the geology and history of the quarry.



4. ROTARY RIVERVIEW PARK

This park, with its scenic river view, is part of the vision for Waupaca downtown revitalization. River Ridge Trail has been incorporated in to the plan to include a hardscape trail and rest area.

This park is also the starting point for a canoe trail. You can take about a 2 3/4 mile trip on the Waupaca River through the city and take out at Riverside Park. Please be aware that river conditions are always changing. There may be obstacles requiring intermediate paddling skills to negotiate the river safely.

When recreating on the downtown sections of River Ridge Trail we encourage you to patronize the local businesses.

The stores offer shopping, food, refreshments and always an inviting atmosphere.



5. RIVERSIDE PARK .5 mi.

Riverside Park is located on Royalton Street on the east side of Waupaca. There is an open play area, picnic area, grills, horseshoe pits, shelter house, water, restrooms, sand volleyball court, playground, and canoe access to the Waupaca River.

This park features the Rachel Carson Trail. The trail winds along the Waupaca River between Riverside Park and the Waupaca Learning Center (10). The trail passes through a diverse hardwood forest with dense undergrowth. The trail was developed by Waupaca Middle School teacher Bob Welch. This is an ecologically sensitive area. This is habitat for the threatened wood turtle. Please leave turtles where you find them. Biking is not allowed and users are asked to remain on the trail.

6. SOUTH PARK

South Park is located between Mirror and Shadow Lakes at the south end of Main Street. The upper part offers our largest shelter, grills, restrooms, water, playground, picnic area and access to a sand beach offering a supervised diving dock and kiddie dock. The lower part includes a shelter, restrooms, grills, sand volleyball, a handicap accessible fishing dock, and a wheelchair accessible paved trail to the beach. There are also boat launches for both Shadow and Mirror Lakes.

The park serves as the hub for a self-guided

Historic Walking tour of downtown Waupaca. The Historical Society also maintains the Victorian era Hutchison House Museum at South Park. From the park, one may choose to take the trail south to the new High School or head back to downtown and other featured trail destinations.

7. GRASS LAKE TRAIL .3 mi.

Another segment is found behind the Waupaca Woods Mall on Smith St. Here a crushed limestone path skirts Grass Lake, a glacially formed kettle lake, and its wetlands, teeming with birds and wildlife.

8. SHAMBEAU HILL 1.6 mi.

Located on the northeast part of the city, this off-road trail was the first completed segment in the trail system. It winds through remnant prairie atop a picturesque ridge, hardwood forest of 150 yr. old white oak, marshland and stands of black locust and pine with scenic views.



9. WAUPACA HIGH SCHOOL TRAIL 2 mi.

This is a paved path that parallels Lakeside Parkway to Highway 10 and then to the High School along Highway 22. The Trail allows safe walking and biking to the High School and a mile long wood chipped nature trail.

10. RIVER RIDGE NATURAL AREA

The River Ridge Natural Area is located along the Waupaca River Across from Fox Valley Tech at Godfrey Drive. There is an accessible limestone trail that leads into the woods and proceeds along a flat ridge and then returns to Godfrey Drive next to Sunny Day Child Care. From the ridge, there are more challenging trails leading down into the bottoms along the river. These trails are footpaths that are built to require little maintenance.



Wildflowers abound in spring in this area. On the south side of the river a limestone/boardwalk trail leads from the parking area by the lift station to the canoe access and goes under the bridge to connect with the paved trail that runs along HWY 22/54.



The River Ridge Trail is a co-sponsored project of the Waupaca County Natural Resources Foundation Inc., a nonprofit corporation exempt from federal tax under section 501(c)(3) of the IRS code.

The River Ridge Trail is part of a plan to preserve urban natural areas or "green space" in a non-motorized trail system that winds throughout the Waupaca area. There are several scenic off road trail segments located throughout the city. These segments are connected by streets that are designated with River Ridge Trail signs. Bikes are allowed only on limestone or blacktopped surfaces. The trail lies in the tension zone between Wisconsin's northern and southern eco-regions, an area of unique biological diversity. By linking parks and other public and private lands, the community and its visitors will be able to enjoy the wealth of natural features for years to come. The Waupaca Tree Advisory Committee has developed the trail with support from the City of Waupaca, Waupaca County, WCC, Rawhide, local businesses, organizations and numerous individuals. Without their time, effort and donations much of our work could not be accomplished.

Though great progress has been made River Ridge Trail is a work in progress and its future depends on the continued support of the community. For information on volunteer opportunities call (715) 258-4435. The River Ridge Trail Maintenance and Development Endowment Fund provides for the ongoing maintenance and development of the trail system. Tax deductible donations are appreciated.

Checks can be made payable to:
CFFVR/River Ridge Trail Fund
 Mail to: CFFVR/River Ridge Trail Fund, PO Box 563,
 Appleton, Wis. 54912

River Ridge Trail Maps and brochures for Historic Walking tours are available at the Waupaca Recreation Center office at 407 School Street and the Waupaca Area Chamber of Commerce. Thank you for supporting our unique Waupaca River Ridge Trail system!

PLACES OF INTEREST

1. SWAN PARK 2.3 mi.

Swan Park and its trail are the jewel of Waupaca's park system. Without the foresight and generosity of Gerald Swan, this unique area would not be available to the residents of the Waupaca area. The largest park in the City, its amenities offer something for all. The park includes a large playground, skate board park, ball diamonds, restroom and concession stand. Currently a sledding hill, amphitheater, ice rink/basketball courts and additional parking are being constructed which will make the park a year around destination.

Approximately half of the trail is bikeable limestone that winds through pines, mature hardwoods, across a wetland boardwalk and back to the ball diamonds and concession area. The southwest section is a woodchip trail for hiking only. It winds through dense hardwoods complete with shade loving wild flowers and abundant wildlife. The north loop is a woodchip trail which wanders .7 mi. through a mixed hardwood forest. Along the trail there are also a series of interpretive signs

describing unique natural features. Trails are open in the winter for hiking and snowshoeing. Across from Swan Park is Woodland Park Subdivision which includes Woodland Park Trail. This trail is a public/private partnership that connects Swan Park, Brainard's Bridge Park and allows users to cross Highway 49 safely via an underpass.

2. BRAINARD'S BRIDGE PARK .25 mi.

Brainard's Bridge Park is located along the Waupaca River and amenities include a shelter, water, restrooms, grills, playground and picnic areas. This park is unique for its iron bridges connecting two islands. This section of hiking trail north of the Waupaca River winds its way through the Waupaca School Forest. This beautiful stretch of woodchip trail was planned and constructed by High School Agri-Science students. It provides a quiet off-road access to Swan Park.

